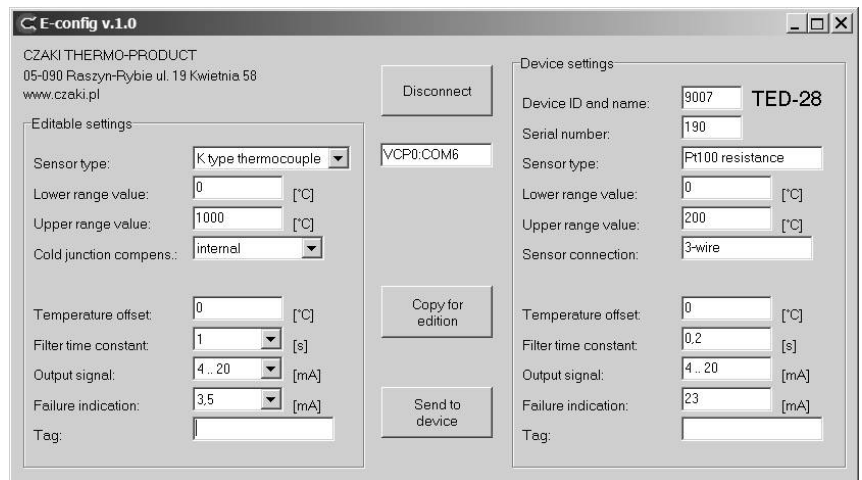


DEVICE PROGRAMMING INTERFACE

type IF-2013U, IF-2013U-DPT



- supply from the computer USB port
- visual indication of data transmission
- galvanic insulation between the computer and the programmed device
- power supply for the programmed device
- user-friendly software for PC



The interface is designed for programming transmitters **TEH** and **TED** series and other devices based on the same protocol of transmission, like **DPT-21** dewpoint transmitter. The interface is connected to the USB port of the computer and after installing the drivers is seen as an additional serial port. It is powered from the USB port and provides power for the programmed device. It also provides galvanic insulation between the computer and the programmed device. Bidirectional data transmission is signalled by flashing LEDs. The plastic casing is fitted on one side with a USB-B socket, and on the other - with a disconnectable terminal for connecting the device. A set of cables for connecting a PC is supplied with the interface. Supplied with the set is software: drivers and Windows® application program **E-config** (for IF-2013U) or **DPT-config** (for DPT-21). The latest version of the software is available for downloading from the website www.czaki.pl.

TECHNICAL DATA

| | |
|--------------------------------------------|-----------------------------------------------------------------|
| Computer side connector | USB-B socket |
| Computer signal standard | USB1.1, USB2.0 |
| Supply current | ca. 25 mA (programming) max. 150 mA (short device terminals) |
| Galvanic insulation between connectors | 500 V AC |
| Programmed device supply voltage | 20 V DC ± 2 V DC |
| Programmed device supply output resistance | 250 Ω |
| Ambient temperature | 0 ... 50 °C |
| Dimensions / weight | 50 x 35 x 20 mm / ca. 20 g |
| USB A4-B4 cable length in set | 2 m |
| Cable for connecting device length in set | 30 cm (IF-2013U) or 1m (IF-2013U-DPT) |

Example for order: **IF-2013U** denotes interface for programming temperature transmitters **TEH** and **TED** series and other devices being based on the same protocol of transmission.

IF-2013U-DPT denotes interface for programming **DPT-21** dewpoint transmitter.